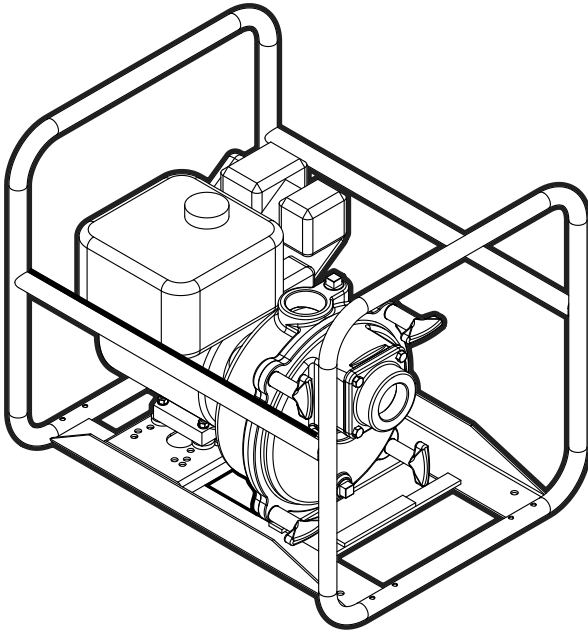


Gas Engine FTSP

BOOK: GES-015
DATE: Mar. 1, 2014



Features:

- **Volute:** Ductile iron rugged construction. Self-priming with priming and drain plugs. Removable front cover features a built in check valve to facilitate priming.
- **Impeller:** Cast iron semi-open, two vane type, capable of handling spherical solids.
- **Mechanical Seal:** Silicon Carbide/Silicon Carbide faces, Buna elastomers.
- **Engine:** Industry recognized Briggs and Stratton Vanguard, or Honda and Kohler equipped with adjustable throttle controls.
- **Mounting:** Horizontal position.

Applications:

- Irrigation
- Construction
- Mining
- Commercial
- Municipal
- Light Industrial

Specifications:

Capacities: to 615 gpm

Heads: to 100 feet

Working Pressure: 150 psi max

Temperature: 212 °F max

Rotation: clockwise viewed from engine side

Pipe Connections: NPT

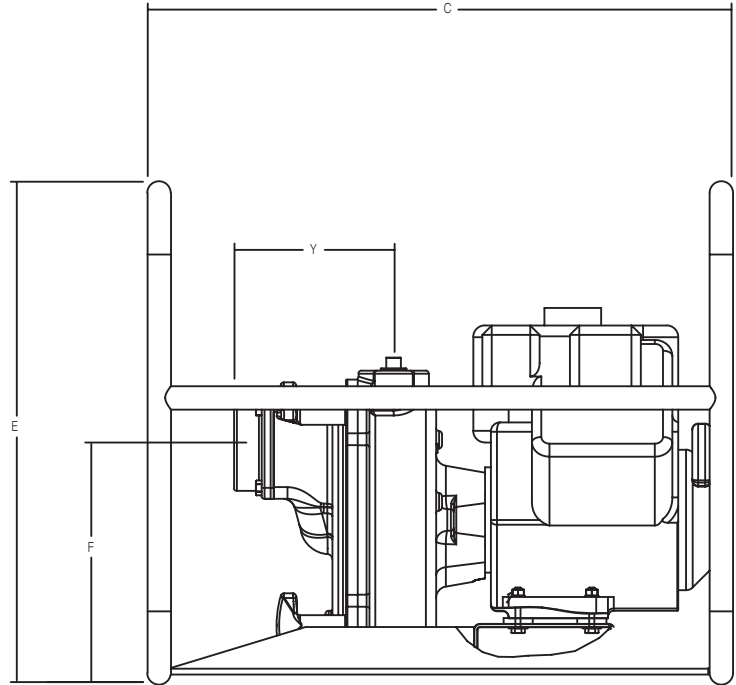
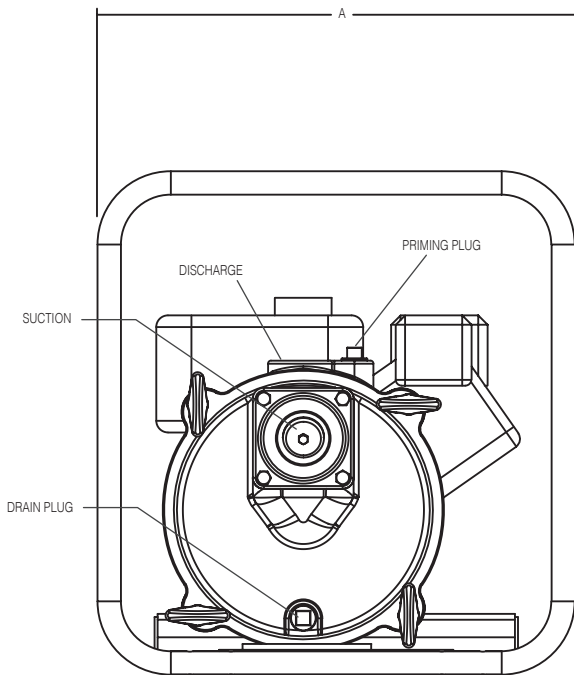
Pumps	Discharge	Suction
FTSP-2HRF*	2"	2"
FTSP-3HRF*	3"	3"
FTSP3DRF-ES	3"	3"
FTSP4-18V	4"	4"

Note: *FTSP-2HRF & FTSP-3HRF include roll frames.

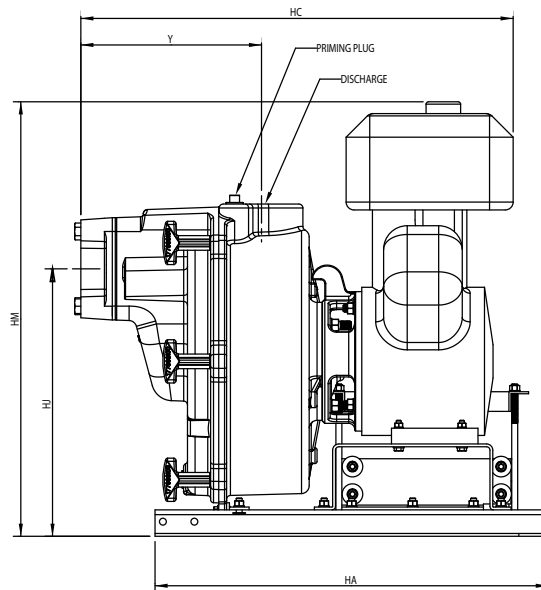
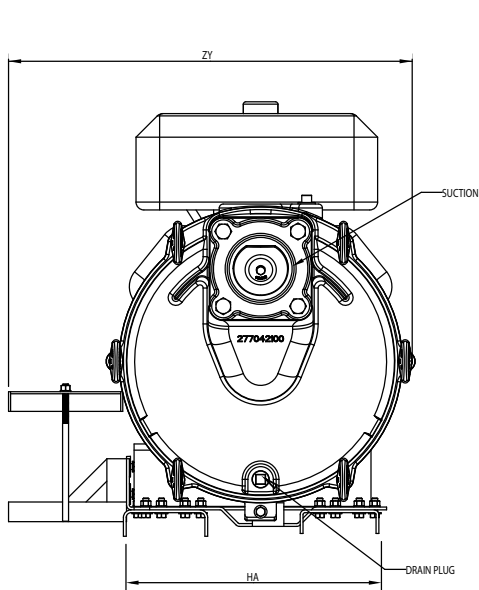
Gas Engine FTSP

Dimensional Drawings:

FTSP-2HRF and FTSP-3HRF



FTSP4-18V



Gas Engine FTSP

Dimensions:

Model	HA	HB	HC	HJ	HM	ZY	Y	A	C	E	F
FTSP-2HRF	-	-	-	-	-	-	6.72	20.30	25.00	21.50	9.71
FTSP-3HRF	-	-	-	-	-	-	6.93	20.30	25.00	21.50	11.22
FTSP4-18V	16.24	25.00	27.48	17.00	27.62	25.66	11.49	-	-	-	-

Note: Dimensions are for estimating purposes only. All dimensions in inches.

Ordering Information:

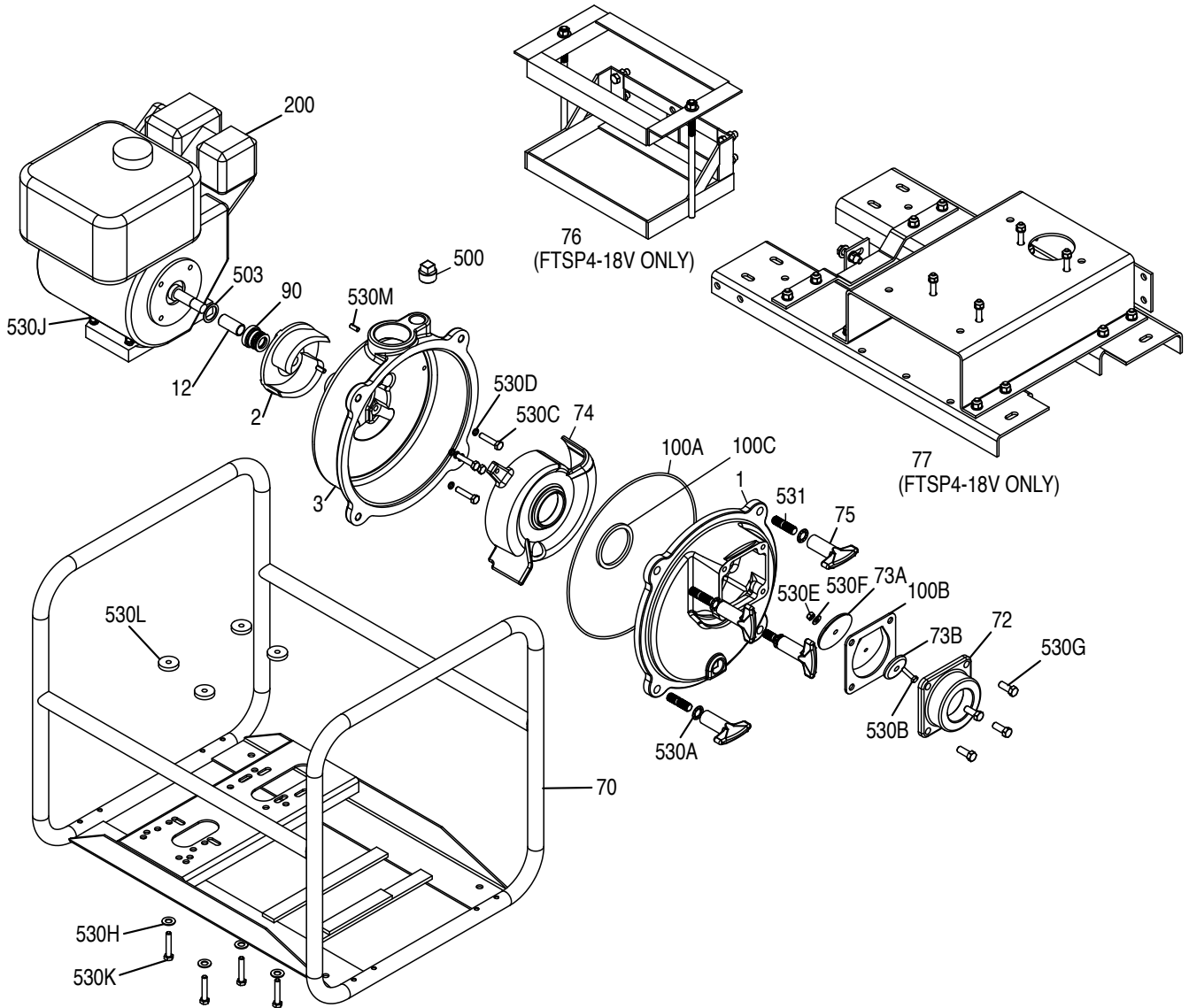
Pump Size (Dis x Suc)	CC's	Model Description	Engine Description	Order Number	Low Oil Shut-Off	Wt.
2 x 2	160	*FTSP-2HRF	Honda, with 0.8 gal. fuel tank	90281005	YES	107
3 x 3	270	*FTSP-3HRF	Honda, with 1.3 gal. fuel tank	90281009	YES	151
3 x 3	442	**FTSP-3DRF-ES	Kohler Diesel, with 1.3 gal. fuel tank	90282009	YES	217
4 x 4	570	**FTSP4-18V	Briggs & Stratton Vanguard, with 2.2 gal. fuel tank	90281018	NO	355

Note: All weight in pounds. *FTSP-2HRF & FTSP-3HRF include roll frames.

**Equipped with electric start. Battery and cables not included.

Gas Engine FTSP

Exploded Parts Drawing:



Gas Engine FTSP

Materials and Parts:

Fig No.	Part Description	Part No.				Materials of Construction
		FTSP-2	FTSP-3	FTSP-3D	FTSP-4	
1	Front Casing	305458001	305458002		305458003	Cast Iron, ASTM-A48 CL30
2	Impeller	305458004	305458005		305458006	Cast Iron, ASTM-A48 CL30
3	Rear Case	305458007	305458008		305458009	Cast Iron, ASTM-A48 CL30
Not Shown	Motor Adaptor	n/a			305458024	Ductile Iron, ASTM-A536 65-45-12
12	Mech Seal Shaft Sleeve	305458010	305458011		305458012	416 Stainless steel
70	Roll Frame	305458013		305458026	305458014	CRS
72	Check Valve	305455010	305458015		305454020	Cast Iron, ASTM-A48 CL30
73A	Top Weight- Check Valve	305455011	305458016		305454023	Cast Iron, ASTM-A48 CL30
73B	Bottom Weight - Check Valve	305455012	n/a		305454023	Cast Iron, ASTM-A48 CL30
Not Shown	Washer, Flapper	n/a	305458027		n/a	CRS
74	Volute	305458017	305458018		305458019	Cast Iron, ASTM-A48 CL30
75	T-Handle Fasteners	305458020				Cast Iron, ASTM-A48 CL30
76	Battery Holder Assembly	n/a	n/a	305457008	305457008	CRS
77	Pump Frame Assembly	n/a			305480014	CRS
90	Mechanical Shaft Seal	305463094	305463095		305463096	SiC/SiCxBUNA-SS
100A	Case O-Ring	305463097	305463098		305463099	Nitrile
100B	Flapper Valve	305454043	305458021		305454045	Neoprene
100C	Square-Ring - Volute	305463100	305463101		305463102	Nitrile
100D	Motor Flange Gasket	n/a	n/a	n/a	305463103	NA60
200	Engine	202001	202002	201941	202065	Misc.
500	Pipe Plug 3/4" (2 Req)	305463050				Cad-Plated Steel
503	Water Slinger	305458022	305456009		305457010	Neoprene
531	Stud - Front Casing	305463089				Zinc Plated Steel
530A	Lockwasher - T-handle (4 Req)	305463104				Zinc Plated Steel
530B	Flapper Bolt	305463056	305463105		305463058	Zinc Plated Steel
530C	Hex Bolt - Motor Adapter (4 Req)	305463106	305463093	n/a	305463110	Zinc Plated Steel
Not Shown	Stud - Engine	n/a	n/a	305463093	n/a	Zinc Plated Steel
Not Shown	Washer - Engine	n/a	n/a	305463235	n/a	Zinc Plated Steel
Not Shown	Nut - Engine	n/a	n/a	305463236	n/a	Zinc Plated Steel
530D	Collar Seal - Motor Adapter (4 Req)	305463107	n/a			Nylon
530E	Nut, Flapper	305463061	305463062			Zinc Plated Steel
530F	Washer, Flapper	305463063	305463108			Zinc Plated Steel
530G	Valve Hex Cap Screw (4 Req)	305463010	305463064		305463065	Zinc Plated Steel
530H	Washer - base (4 req)	305463108	305463109			Zinc Plated Steel
530J	Hex Nut - base (4 req)	305463062				Zinc Plated Steel
530K	Hex Bolt - base (4 Req)	305463090	305463111	305463237	305463090	Zinc Plated Steel
530L	Isolator Washer - base (4 req)	305463112		n/a	n/a	Rubber
Not Shown	Volute Roll Pin (6 req)	305463113	n/a			303 Stainless Steel
Not Shown	Stud - Volute	n/a	305463114		305463115	18-8 Stainless Steel
Not Shown	Lockwasher - Volute	n/a	305463238			300 Stainless Steel
Not Shown	Nut - Volute	n/a	305463239			300 Stainless Steel

Replacement Pump End Only			
Pump Size (Dis x Suc)	Model Description	Order Number	Wt.
2 x 2	FTSP2-K	90280005	74
3 x 3	FTSP3-K	90280009	90
4 x 4	FTSP4-K18V	90280018	230
3 x 3	FTSP-3D-K	90289009	118

Model	Replacement Engine Description	Engine Order Number
FTSP-2	ENG HONDA GX160UT1TX2 160cc OHV	202001
FTSP-3	ENG HONDA GX270UTPA2 270cc OHV	202002
FTSP-4	ENG B/S 356447-0191-B1 570CC	201941
FTSP-3D	ENG KOHLER KD420-4001 442cc	202065

Gas Engine FTSP

Performance Curve:

